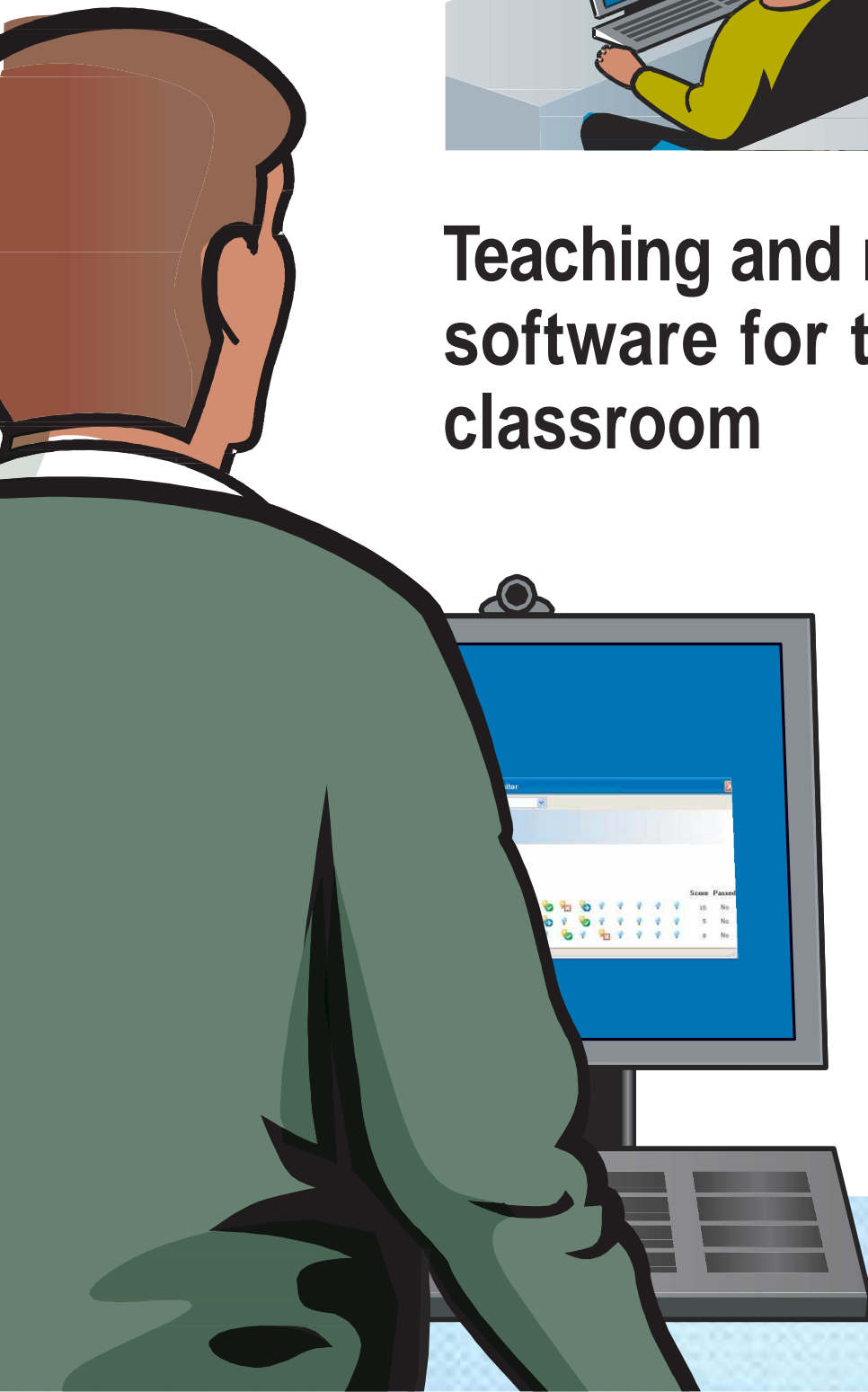




Teaching and management software for the networked classroom



A teaching tool for the 21st-century classroom

Instructing today's computer literate students using conventional teaching tools is a challenge. Boards and projectors are simply not suited to subjects where hands-on experience is the best option. Fortunately there's an economical and effective answer at hand – NetOp School. NetOp School lets teachers instruct students by broadcasting their screen (or any student's screen) to every PC in the class simultaneously. This, in effect, gives all students a front-row seat and first-hand instruction.

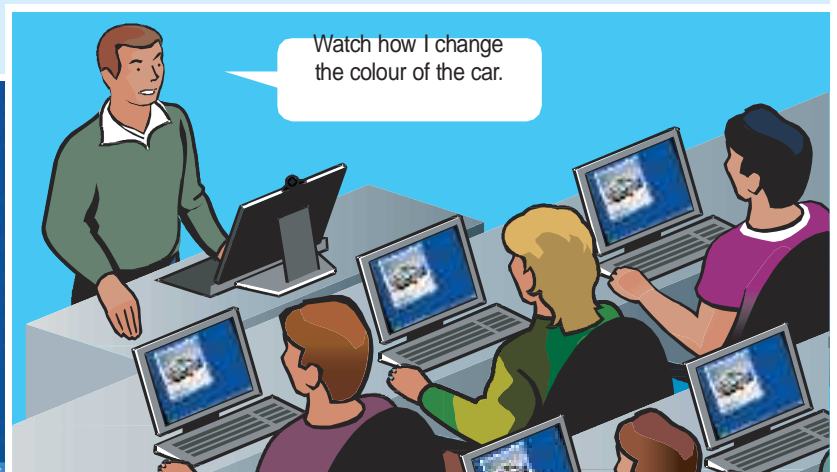
The program is also packed with scores of user-friendly features to help you manage and assist students effectively. And a state-of-the-art Test Center lets you carry out online tests at the touch of a button. All this also makes NetOp School ideal for virtual learning scenarios. So if you're still using 20th-century teaching tools in a 21st-century classroom, perhaps it's time you took a lesson from NetOp School – for your own sake as well as that of your students.

Teach



Share any screen with the class; distribute and collect work

With NetOp School you can instruct each student individually, yet simultaneously. By broadcasting your screen to the rest of the class, each student effectively receives a front row seat and first-hand instruction. And you don't have to worry about students paying attention to your broadcast. NetOp School allows you to lock student keyboards and mice during presentations.

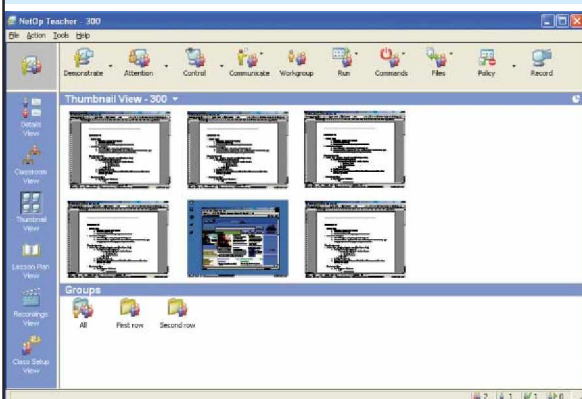


Manage



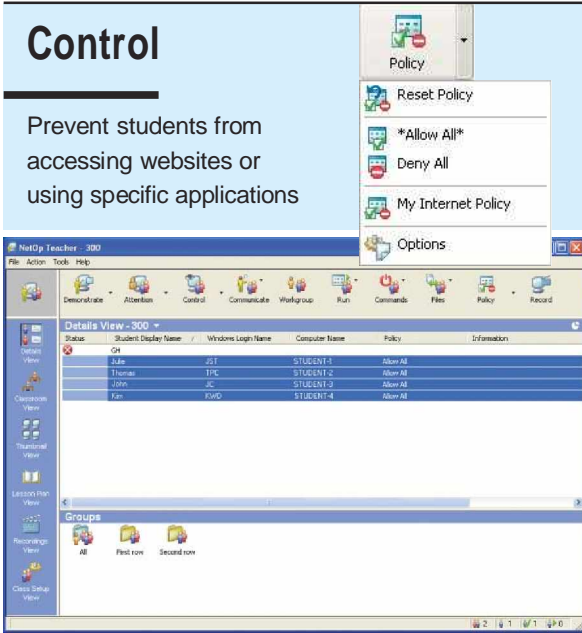
Manage your classroom and follow students as they work

It is important for teachers to follow students' progress as they work. However, wandering around the class can be both distracting and intimidating. With NetOp School you can monitor all students at once or individually from your own desk, and take over a student's computer easily to provide discreet assistance.



Control

Prevent students from accessing websites or using specific applications

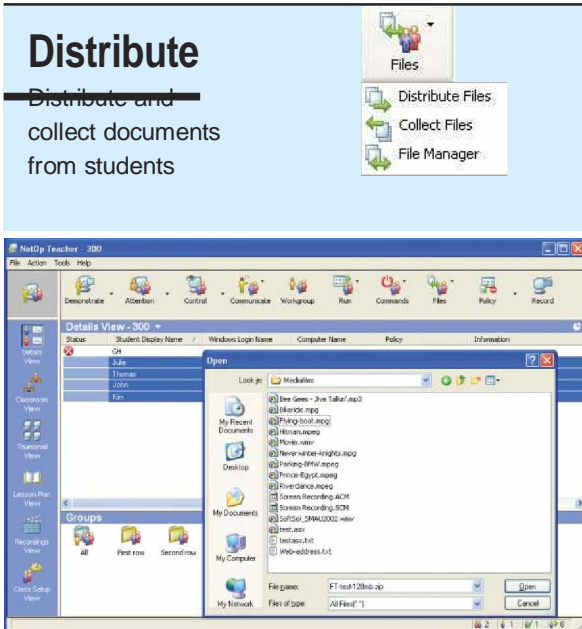


With NetOp School you don't have to worry about students accessing inappropriate websites or playing games instead of working. You can apply policies to allow or deny specific programs and web addresses. Policies can be applied and changed on the fly to match a teaching situation.



Distribute

Distribute and collect documents from students

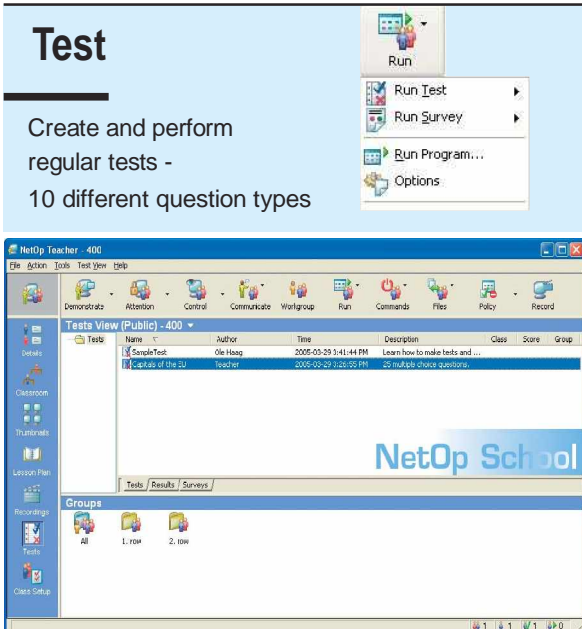


Offline tests and assignments can be distributed and collected from all student computers at the touch of a button. And students can place homework in designated folders for easy collection – far simpler than receiving floppy disks or emails from each student.



Test

Create and perform regular tests - 10 different question types



Use NetOp School's powerful Test Center to appraise students online. Rapidly prepare exams using the module's Wizard. Once ready, distribute a test to all students simultaneously at the touch of a button. Finally, correct and score tests automatically for convenience and speed. You can even generate electronic reports on each student's performance, enabling immediate individual feedback.



The quick, easy and accurate way to test students

NetOp School's Test Center is a simple and fun way to appraise students regularly. Tests can be quickly prepared based on one of the system's ten question types, which include multiple choice, dictation and image/text matching. Upon completion, test results are instantly generated, giving students rapid feedback.

Prepare

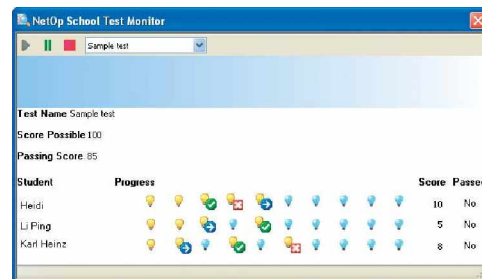
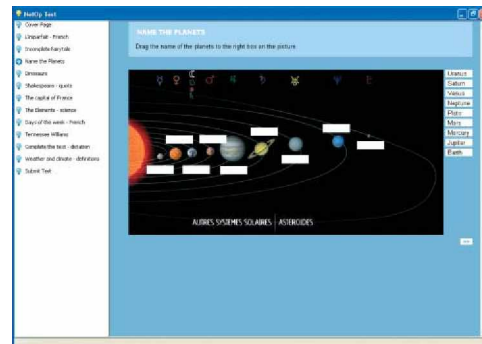
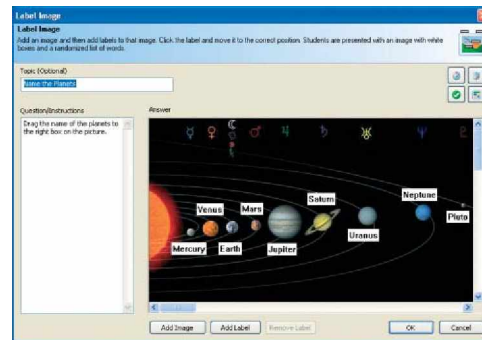
Containing ten default question types, the module's Wizard makes preparing exams an easy three-step process. Once you've prepared the questions, select from 13 layout styles. You are then ready to run the test online or, alternatively, print it out and distribute.

Perform

Online tests are distributed to all students simultaneously. Tests can be 'Unrestricted', allowing students to answer questions in random order, with the chance to go back and change answers. Alternatively, 'Restricted' tests force answers sequentially with no chance of going back. Time limits can be set for each question as well as for the whole test.

Review

The teacher's Test Monitor window lets you follow the progress of each student in real time. Questions can also be scored and corrected in real time. Once finished, a test report is generated, containing a class summary and details of each individual performance. This lets you give students instant feedback.



Other key features

Attention

Lock the screen, keyboard and mouse on student computers with a single command to obtain immediate attention.

Run

Launch pre-planned documents or applications on student computers remotely.

Communicate

Initiate online written or oral discussion forums. It's possible to hold multiple text discussions and save the text dialogs, and to send instant messages to the entire class in rich text format, including links to websites.

Workgroup

Create independent work groups and transfer full Teacher module functionality to appointed group leaders. The teacher retains overall control of the separate groups.

Commands

Logoff, shutdown or restart all computers with a single command.

For a full list of features, please see: www.netop.com/nsch-features

Technical requirements

Windows:

Windows Server 2003.
Windows XP. Windows 2000.
Windows NT4. Windows ME.
Windows 9x.
Windows Terminal Server 2000 or NT4.

Multimedia:

Windows Media Player 6.4 or higher.
Soundcard with support for Wave Out Mix.

For a full list of technical requirements, please see: <http://requirements.netop.com>

Software CD includes English, German, French, Spanish, Italian, Danish, Dutch, Japanese, Chinese and Arabic versions of the program.

